

## Moldex3D eXplorer 2011 for SolidWorks

- Design in 3D, Analyze in 3D

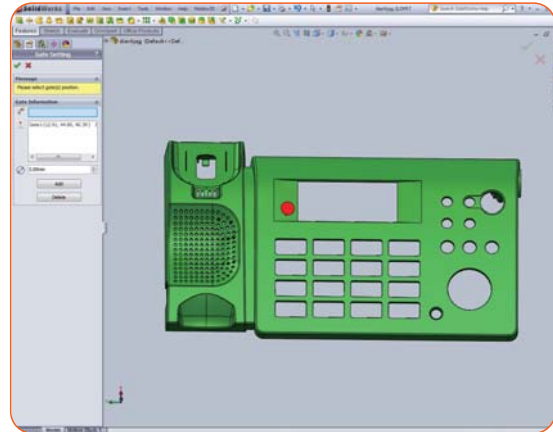
## Make Designs Perfect

**Moldex3D eXplorer 2011 for SolidWorks** is an intuitive interface fully embedded with SolidWorks, providing a quick access to Moldex3D flow simulation. The seamless integration leads a way to optimizations for not only part designs, but also manufacturing process parameters.

### Benefits

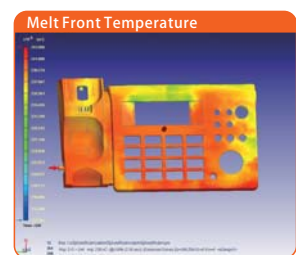
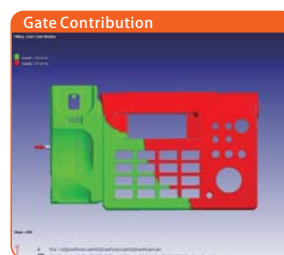
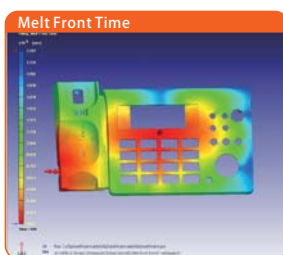
Upfront CAE for part designers to

- Avoid short shot
- Manipulate weld line and air trap
- Check gate contribution for flow balance
- Reduce pressure drop
- Optimize wall thickness for profitability



### Features

- Fully embedded in SolidWorks CAD software, no additional training is needed.
- Automatic 3D mesh generation, no user intervention and CAD conversion are needed.
- Comprehensive plastic material database (>5,000 grades) and friendly interface for setting molding parameters.
- Pioneering 3D technology for more accurate results rendering, smart animations and automatic HTML report generation.
- High performance 3D filling simulation supported by parallel computing up to 4 cores to do a quick part verification.



### System Requirements

- |               |            |  |
|---------------|------------|--|
| ■ Platform    | Windows    | Windows 7 32/64 bit, Windows Vista 32/64 bit |
| ■ Software    | SolidWorks | 2008 SP5/2009/2010/2011                      |
| ■ Recommended | CPU        | Intel P4 2.8 GHz or higher                   |
| Hardware      | RAM        | 2.0 GB or higher                             |
|               | Hard disk  | 60 GB or higher                              |

# Moldex3D

Headquarters  
8F-2, No.32, Taiyuan St. Chupei City, Hsinchu County 302, Taiwan  
TEL:+886-3-560-0199

America Office  
21800 Haggerty Road Suite 109 Northville MI 48167  
TEL:+1-248-946-4570

mail@moldex3d.com  
www.moldex3d.com